

# ÜBERSICHTSZEICHNUNG

ASSEMBLY DRAWING

**GHOST**



KATO FS MY21

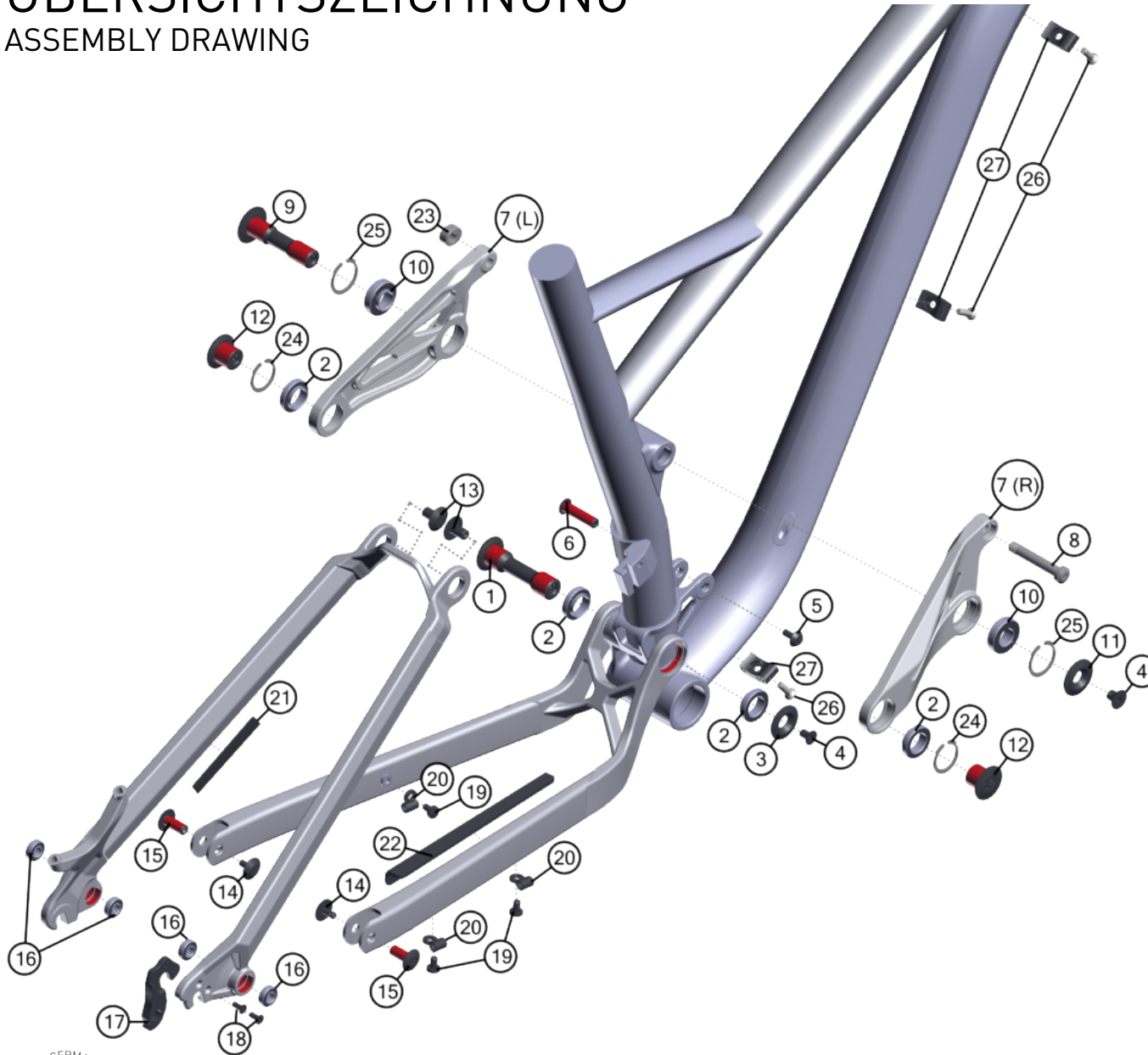
2020-07-13

V01

# ÜBERSICHTSZEICHNUNG

## ASSEMBLY DRAWING

# GHOST



**Hinweis:**

Bei Schrauben muß mittelfeste Gewindesicherung verwendet werden.  
**Rede Flächen müssen gefettet werden.**

**note:**

use medium strength screwlock for screw threads.  
**red surfaces has to be greased.**

**FACT SHEET:**

SHOCK LENGTH:	200 MM
SHOCK HARDWARE:	
TOP:	30 MM
BOTTOM:	22,2 MM
HEADSET:	
TOP:	ZS 44
BOTTOM:	ZS 56
SEATPOST DIAMETER:	31.6 MM
CLAMP INNER DIAMETER:	34.9 MM
BOTTOM BRACKET:	BSA
KICKSTAND:	-----
ISCG STANDARD:	-----

# ÜBERSICHTSZEICHNUNG

## ASSEMBLY DRAWING

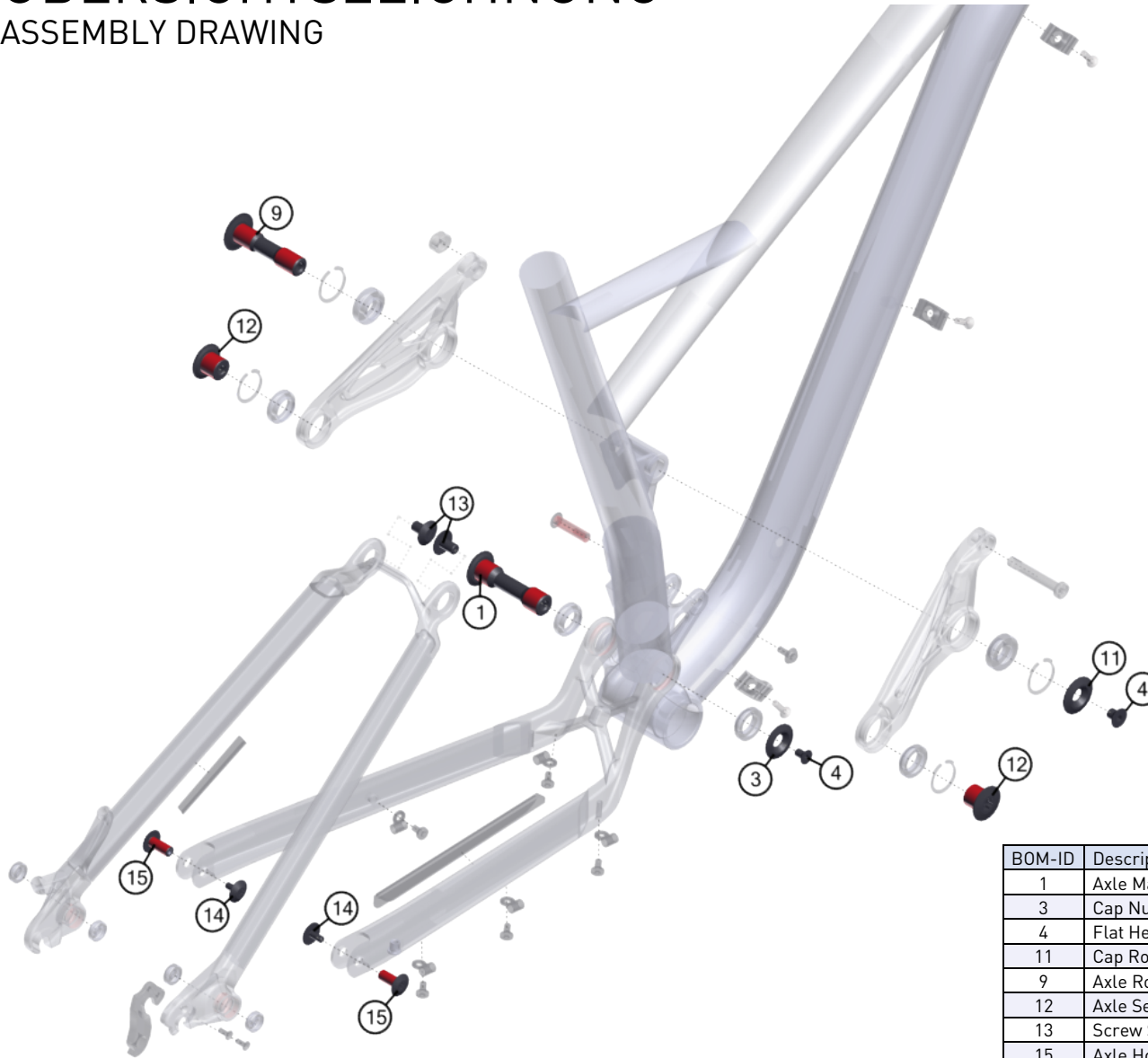
# GHOST

BOM-ID	Item no.	Torque	Description	Specification	Drawing no.	QTY
1	SM1364	8 Nm	Axle Main Pivot	T50	GH0-AMR16AX-AMP	1
2	SM1379		Seat Stay & Main Pivot Bearing		6803V2RS/8	4
3	SM1370		Nut Main Pivot		GH0-AMR16NP-NMP	1
4	SM1375	8 Nm or 12 Nm	Flat Head Screw M8	T30 - M8 x 20mm	GH0-AMR16SC-PM820	2
5	SM1377	6 Nm	Screw Shock Mount	T25 - M5 x 12mm	GH0-AMR16SC-NSM512	1
6	EZ2254	6 Nm	Axle Shock Bottom	T30 - M8 x 31,2mm	GH0-AMR16AX-ASB	1
7 (L)	FROT0024		Rocker (left) set		G27M-F13AM_04-02-301	1
7 (R)	FROT0024		Rocker (right) set		G27M-F13AM_04-02-301	1
8	EZ2253	6 Nm	Axle Shock Top	T25 - M8 x 51mm	G27M-F13AM-04-04-040	1
9	FRAX0006	12 Nm	Axle Rocker Fix Pivot	T50	G27M-F13AM-04-04-041	1
10	SM1380		Seat Tube - Rocker Pivot Bearing		6902V2RS/10	2
11	FROT0020		Nut Rocker Fix Pivot		G27M-F13AM-04-04-050	1
12	FRAX0007	8 Nm	Axle Seat Stay Pivot	T50	GH0-AMR16AX-ASSP	2
13	SM1378	8 Nm	Screw SS YOKE	T30 - M8 x 13mm	GH0-AMR16SC-NSM813	2
14	SM1376	6 Nm	Screw CS&D0	T25 - M5 x 11mm	GH0-AMR16SC-NSM511	2
15	SM1363	6 Nm	Axle Horst Link	T30	GH0-AMR16AX-AHL	2
16	SM1381		Horst Link Pivot Bearing		688B1+B1-VRS	4
17	EZ1954		Hanger		DTAEND-006-HANGER-CR	1
18	FRSC0054	3 Nm	Screw Hanger	T20 - M4 x 8mm	M4x8xT20	2
19	SM0919	6 Nm	Screw Torx	T25 - M5 x 11mm	SHR-ISO14583-TX25-(A2R)-M5x11	3
20	SM0002	6 Nm	Cable Guide for 1 Cable		YF-W01	3
21	SM1392		SS Protection		GHT14-009	1
22	SM1391		C/S protection, rubber		GHT14-008A	1
23	FRNT0004		Insert nut f. Rocker		G27M-F13AM-04-04-080	1
24	FRWS0026		Circlip SSP 26mm Inverted f. hole (IRTW)	Ø26 mm	IRTW-Ø26	2
25	FRWS0028		Circlip SSP 28mm Inverted f. hole (IRTW)	Ø28 mm	IRTW-Ø28	2
26	SM0920	6 Nm	screw torx	T25 - M5 x 11mm	SHR-SEKPF-ISO14581-TX25-M5x11	3
27	SM0265		Cable Guide for 3 cables		YF-025T	3

# ÜBERSICHTSZEICHNUNG

## ASSEMBLY DRAWING

**GHOST**



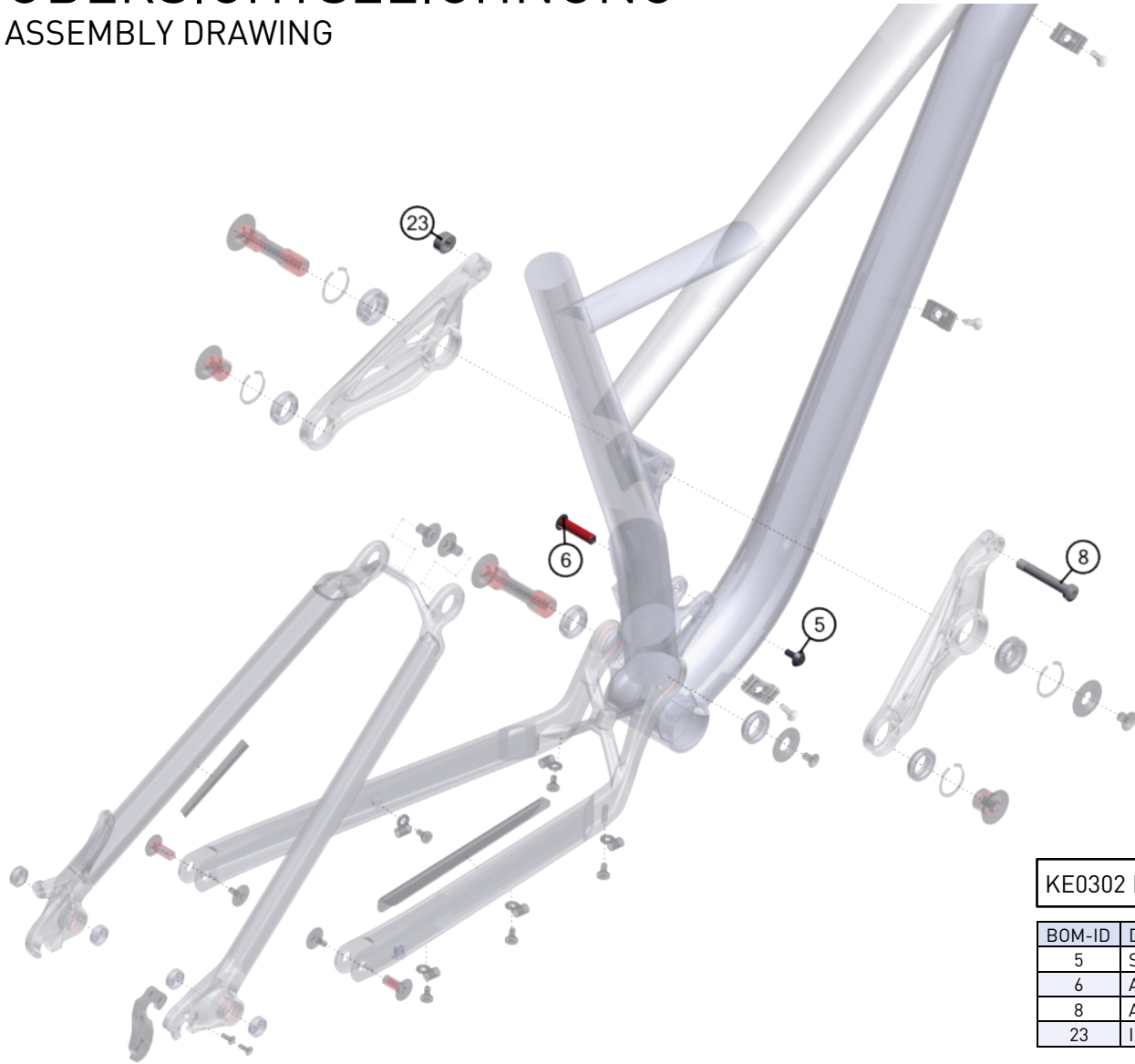
KE0303 Axle & Screw Kit

BOM-ID	Description	Specification	Torque	Item no.	QTY
1	Axle Main Pivot	T50 - ø17 (M8)	8 Nm	SM1364	1
3	Cap Nut Main Pivot			SM1370	1
4	Flat Head Screw M8	T30 - M8 x 20mm	8 Nm or 12 Nm	SM1375	2
11	Cap Rocker Fix Pivot			FROT0020	1
9	Axle Rocker Fix Pivot	T50 - ø15 (M8) x 62,5mm	12 Nm	FRAX0006	1
12	Axle Seat Stay Pivot	T50 - ø17 (M8) x 13,5mm	8 Nm	FRAX0007	2
13	Screw SS Yoke	T30 - M8 x 13mm	8 Nm	SM1378	2
15	Axle Horst Link	T30 - ø8 (M5) x 18,9mm	6 Nm	SM1363	2
14	Screw CS&DO	T25 - M5 x 11mm	6 Nm	SM1376	2

# ÜBERSICHTSZEICHNUNG

## ASSEMBLY DRAWING

**GHOST**



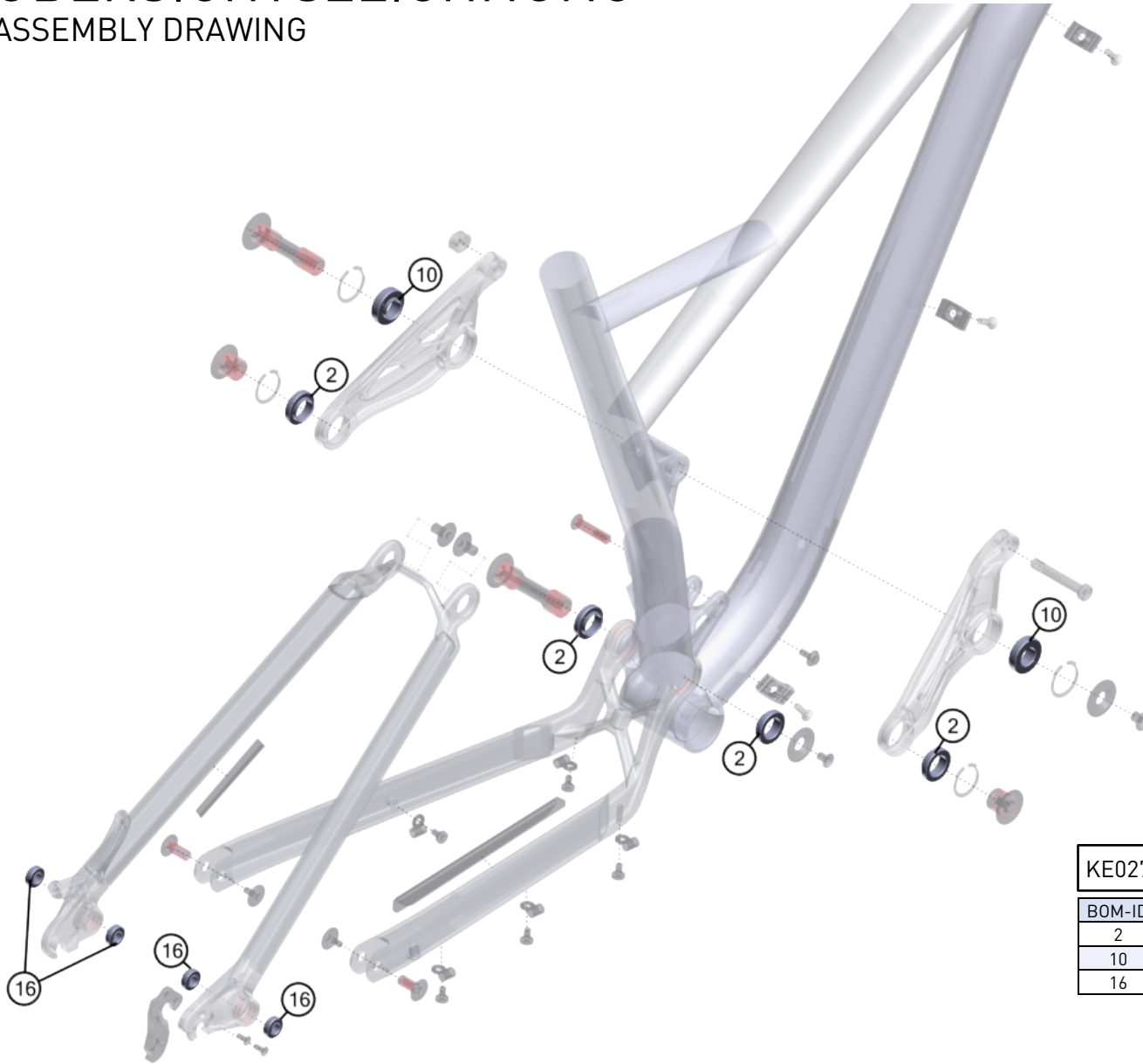
KE0302 Rear Shock Screw Kit

BOM-ID	Description	Specification	Torque	Item no.	QTY
5	Screw Shock Mount	T25 - M5 x 12mm	6 Nm	SM1377	1
6	Axle Shock	T30 - ø8 (M5) x 40mm		EZ2254	1
8	Axle Shock Mount Bolt Top		6 mm	EZ2253	1
23	Insert nut for Rocker			FRNT0004	1

# ÜBERSICHTSZEICHNUNG

## ASSEMBLY DRAWING

**GHOST**



KE0276 Bearing Kit

BOM-ID	Description	Item no.	QTY
2	Main Pivot & Seat Stay Pivot	SM1379	4
10	Seat Tube - Rocker Pivot Bearing	SM1380	2
16	Horst Link Pivot Bearing	SM1381	4

